

THE DEVONSHIRE



Two-story cottage with main and lower levels

Main Level:

2 Bedroom | 2 Bath | 2-Car Garage

Optional finished lower level with additional bath



To learn more, call 888-786-7331 | Quarryville.com
625 Robert Fulton Highway | Quarryville, PA 17566

RETIRE the ORDINARY. *Live the Extraordinary!*[®]

THE DEVONSHIRE

One of our larger cottage homes, the Devonshire has a bright and welcoming dining space as well as an expansive great room for relaxing and entertaining. The master bedroom suite features a large walk-in closet and comfortable bath. An optional finished lower level with full bath offers additional space for recreation and provides privacy for overnight guests.



DEVONSHIRE SQUARE FOOTAGE:

Main level 1,740 SF
Garage 455 SF

Optional:

Lower level 1,740 SF
3-season room 206 SF

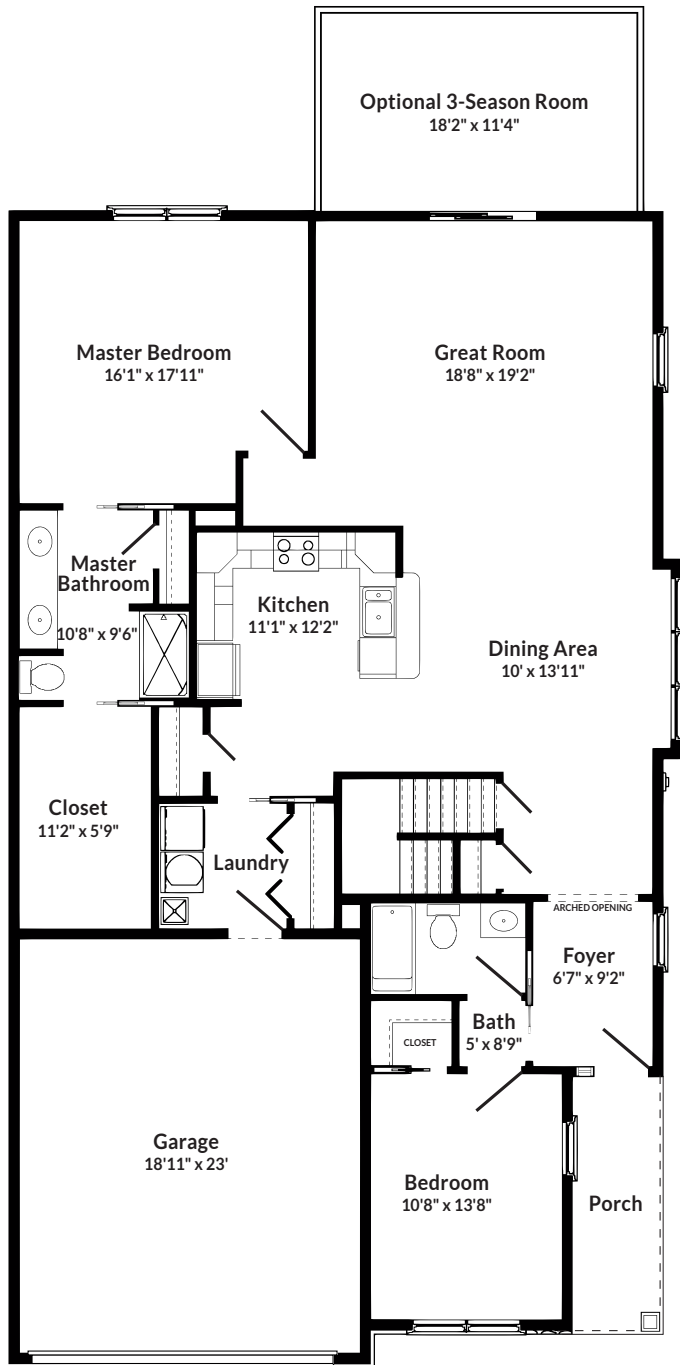
MONTHLY FEE INCLUDES:

- Utilities
- Maintenance of grounds and common areas
- Fitness/Wellness Center membership
- Social and recreational events
- Meal plan
- Trash removal
- 24-hour security
- Snow removal
- Property taxes
- Priority admission to Supportive Living

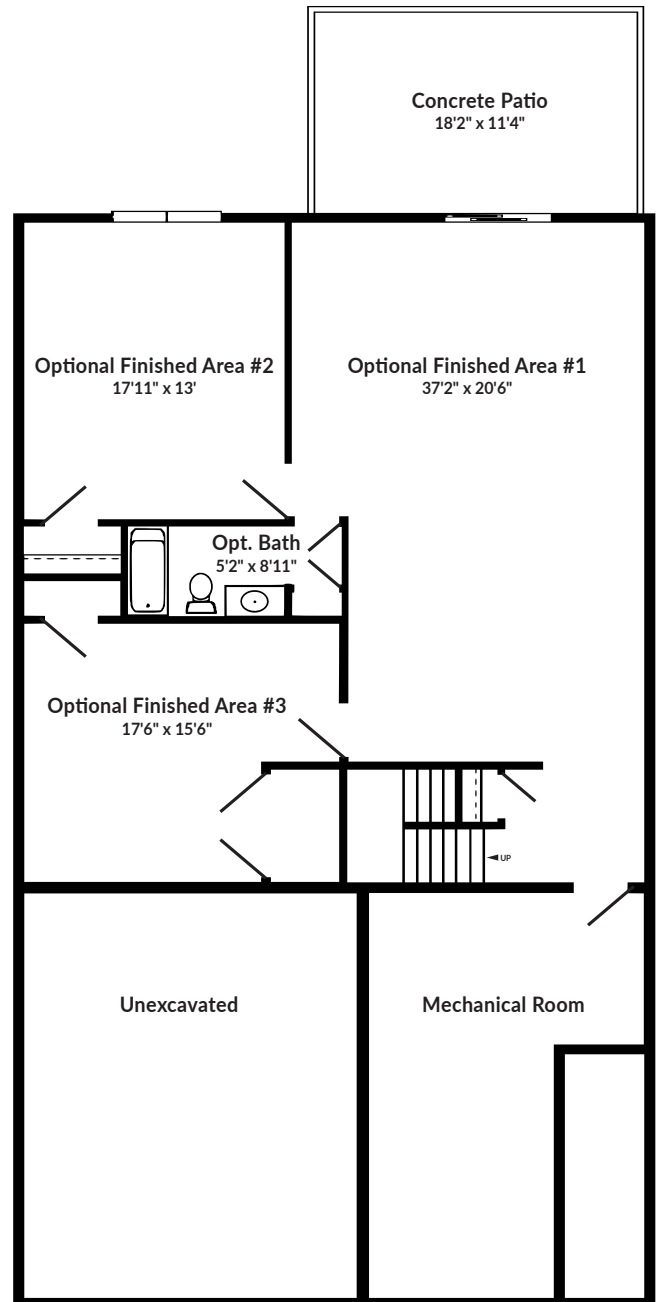
FEATURES:

- 2 bedroom/2 bath
- Attached 2-car garage
- Optional 3-season room or covered deck
- Duplex
- 9-foot ceilings
- All electric kitchen appliances
- Full-sized washer and dryer
- Pets permitted
- Lower level with ample storage
- Bullnose corners
- Multiple flooring options
- Candles in windows

MAIN LEVEL



OPTIONAL FINISHED LOWER LEVEL



THE DEVONSHIRE AT GREAT ROCK

Floor plans may vary due to customization.

THE COTTAGES AT GREAT ROCK



Surrounded by the picturesque hills and farmland of Lancaster County, Pennsylvania, our Great Rock neighborhood continues the tradition of vibrant Christ-centered living that has been the hallmark of Quarryville since its beginning. Neighborhood streets are named after hymn writers whose music has had a continuing impact on the spiritual development of God's people. Their hymns also contain the word, "Rock," referring to Christ. Join the many residents who have learned that Quarryville is a special place where neighbors become friends and friends become family.



QUARRYVILLE
PRESBYTERIAN
RETIREMENT COMMUNITY



To learn more, call 888-786-7331 | Quarryville.com | 625 Robert Fulton Highway | Quarryville, PA 17566

RETIRE the ORDINARY. *Live the Extraordinary!*