

THE ELLIOTT



Two-story cottage with main and upper levels

Main Level:

2 Bedroom | 2 Bath | 2-Car Garage

Optional finished upper level with additional bath



To learn more, call 888-786-7331 | Quarryville.com
625 Robert Fulton Highway | Quarryville, PA 17566

RETIRE the ORDINARY. *Live the Extraordinary!*[®]

THE ELLIOTT

A charming two-story cottage, the Elliott offers a spacious floor plan, elegant design, and inviting areas for relaxing and entertaining. Choose an optional finished upper level bonus room with a full bath to entertain guests and maintain privacy.



ELLIOTT SQUARE FOOTAGE:

Main level 1,456 SF
Garage 458 SF

Optional:

Upper level 909 SF
3-season room 206 SF

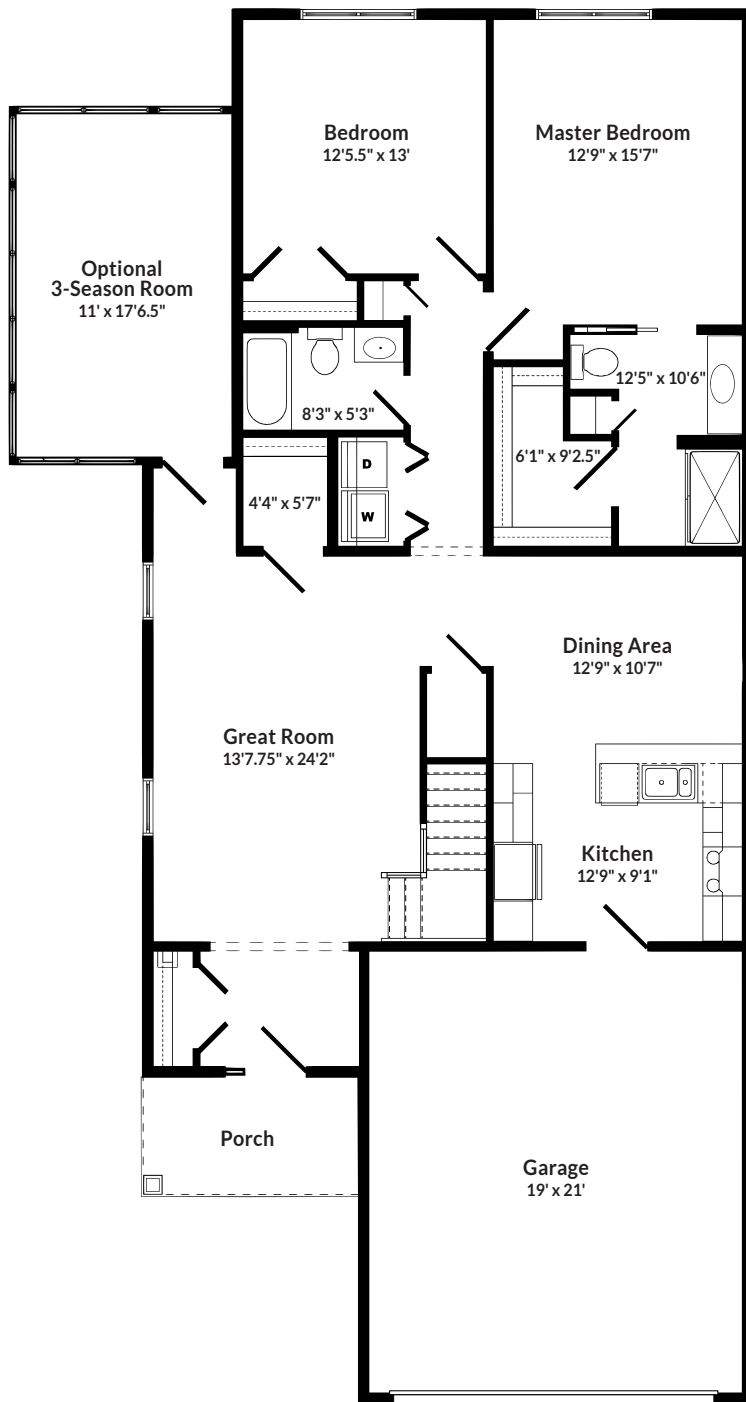
MONTHLY FEE INCLUDES:

- Utilities
- Maintenance of grounds and common areas
- Fitness/Wellness Center membership
- Social and recreational events
- Meal plan
- Trash removal
- 24-hour security
- Snow removal
- Property taxes
- Priority admission to Supportive Living

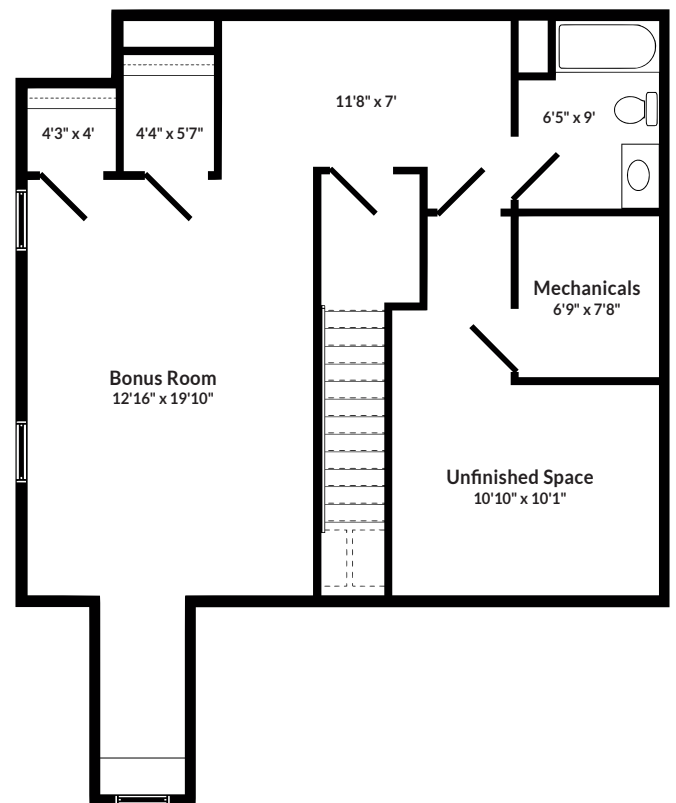
FEATURES:

- 2 bedroom/2 bath
- Attached 2-car garage
- Optional 3-season room or covered porch
- Duplex
- 9-foot ceilings
- All electric kitchen appliances
- Full-sized washer and dryer
- Pets permitted
- Upper level with ample storage
- Bullnose corners
- Multiple flooring options
- Candles in windows

MAIN LEVEL



OPTIONAL FINISHED UPPER LEVEL



THE ELLIOTT AT GREAT ROCK

Floor plans may vary due to customization.

THE COTTAGES AT GREAT ROCK



Surrounded by the picturesque hills and farmland of Lancaster County, Pennsylvania, our Great Rock neighborhood continues the tradition of vibrant Christ-centered living that has been the hallmark of Quarryville since its beginning. Neighborhood streets are named after hymn writers whose music has had a continuing impact on the spiritual development of God's people. Their hymns also contain the word, "Rock," referring to Christ. Join the many residents who have learned that Quarryville is a special place where neighbors become friends and friends become family.



QUARRYVILLE
PRESBYTERIAN
RETIREMENT COMMUNITY



To learn more, call 888-786-7331 | Quarryville.com | 625 Robert Fulton Highway | Quarryville, PA 17566

RETIRE the ORDINARY. *Live the Extraordinary!*