

# THE FRANKLIN



## One-story cottage

2 Bedroom | 2 Bath | 1-Car Garage | 3-Season Room

One-story cottage with convenient living all on one floor



To learn more, call 888-786-7331 | [Quarryville.com](http://Quarryville.com)  
625 Robert Fulton Highway | Quarryville, PA 17566

RETIRE the ORDINARY. *Live the Extraordinary!*<sup>®</sup>

# THE FRANKLIN

Style, convenience, and living areas designed for your relaxation and enjoyment define the Franklin. A striking great room and light-filled dining area provide warm, enticing space in this one-floor cottage home.



## FRANKLIN SQUARE FOOTAGE:

Main level ..... 1,520 SF  
Garage ..... 255 SF  
3-season room .... 150 SF

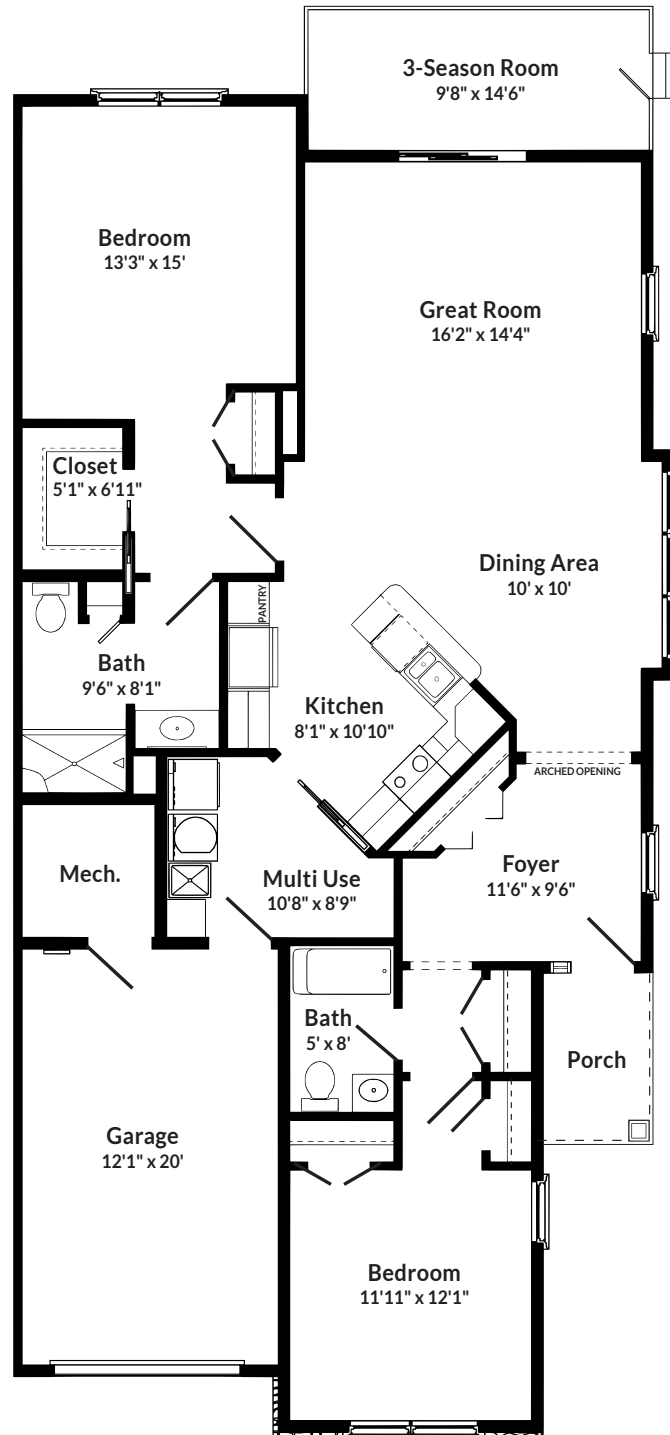
## MONTHLY FEE INCLUDES:

- Utilities
- Maintenance of grounds and common areas
- Fitness/Wellness Center membership
- Social and recreational events
- Meal plan
- Trash removal
- 24-hour security
- Snow removal
- Property taxes
- Priority admission to Supportive Living

## FEATURES:

- 2 bedroom/2 bath
- Attached 1-car garage
- Standard 3-season room
- Duplex
- 9-foot ceilings
- All electric kitchen appliance
- Full-sized washer and dryer
- Pets permitted
- Bullnose corners
- Multiple flooring options
- Candles in windows

## MAIN LEVEL



## THE FRANKLIN AT GREAT ROCK

Floor plans may vary due to customization.



# THE COTTAGES AT GREAT ROCK



Surrounded by the picturesque hills and farmland of Lancaster County, Pennsylvania, our Great Rock neighborhood continues the tradition of vibrant Christ-centered living that has been the hallmark of Quarryville since its beginning. Neighborhood streets are named after hymn writers whose music has had a continuing impact on the spiritual development of God's people. Their hymns also contain the word, "Rock," referring to Christ. Join the many residents who have learned that Quarryville is a special place where neighbors become friends and friends become family.



QUARRYVILLE  
PRESBYTERIAN  
RETIREMENT COMMUNITY



To learn more, call 888-786-7331 | [Quarryville.com](http://Quarryville.com) | 625 Robert Fulton Highway | Quarryville, PA 17566

RETIRE the ORDINARY. *Live the Extraordinary!*