

# THE GIDEON



## Two-story cottage with main and lower levels

Main Level:

2 Bedroom | 2 Bath | 2-Car Garage

Optional finished lower level with additional bath



To learn more, call 888-786-7331 | [Quarryville.com](http://Quarryville.com)  
625 Robert Fulton Highway | Quarryville, PA 17566

RETIRE the ORDINARY. *Live the Extraordinary!*<sup>®</sup>

# THE GIDEON

Enjoy special moments in this elegant cottage home. Designed with your lifestyle in mind, the Gideon combines quality construction, great value, and excellent livability with a convenient floor plan. Enjoy the spacious great room and open dining area along with a main level laundry.



## GIDEON SQUARE FOOTAGE:

Main level ..... 1,456 SF

Garage ..... 458 SF

### Optional:

Lower level ..... 1,456 SF

3-season room .... 206 SF

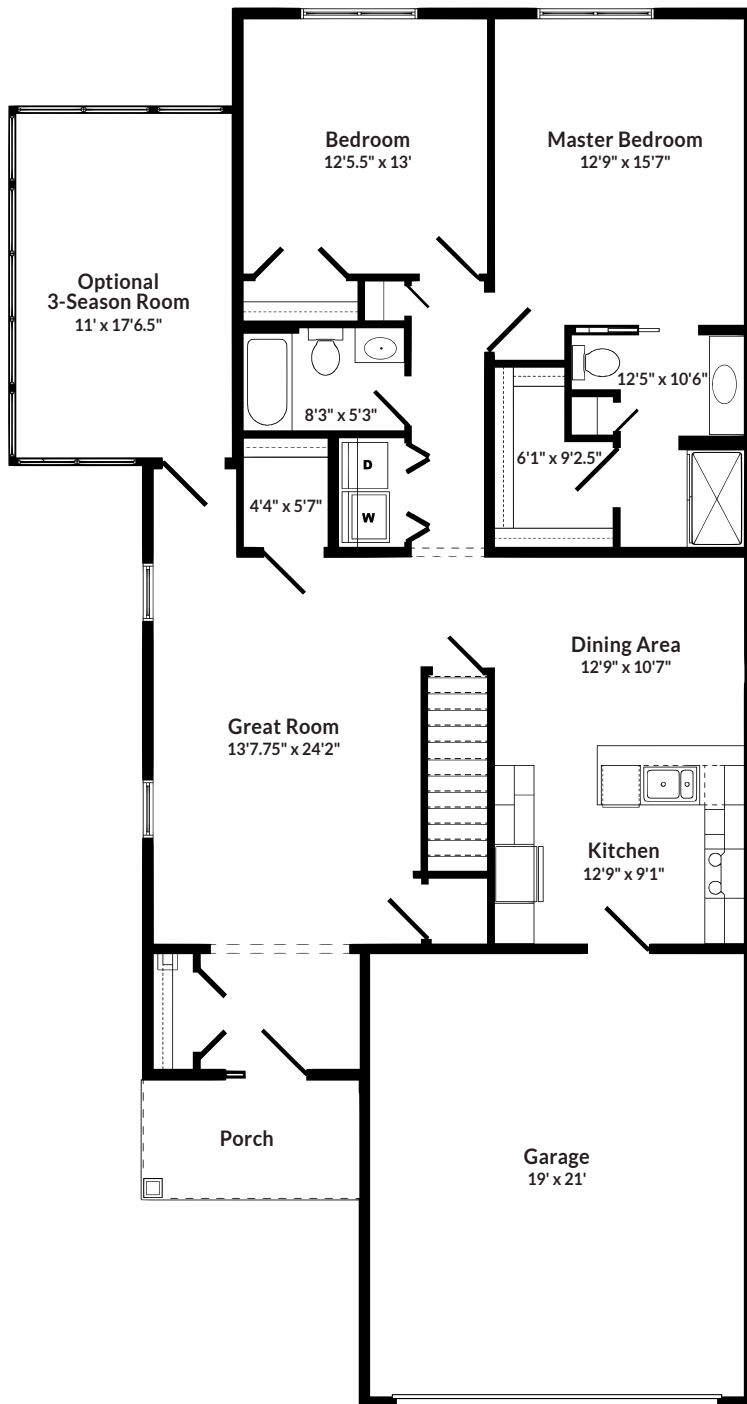
## MONTHLY FEE INCLUDES:

- Utilities
- Maintenance of grounds and common areas
- Fitness/Wellness Center membership
- Social and recreational events
- Meal plan
- Trash removal
- 24-hour security
- Snow removal
- Property taxes
- Priority admission to Supportive Living

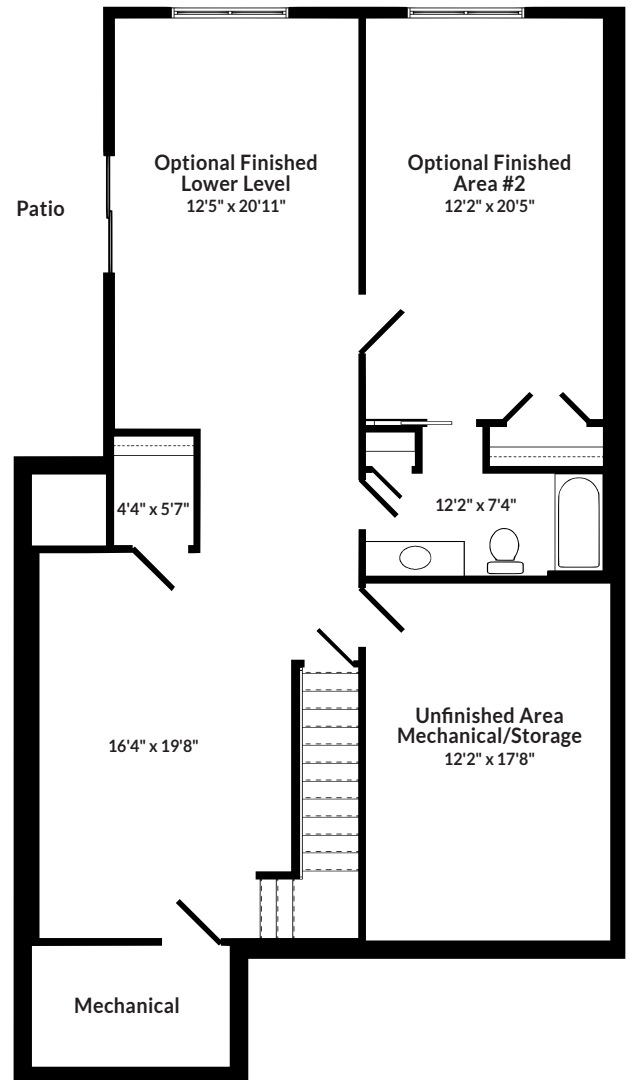
## FEATURES:

- 2 bedroom/2 bath
- Attached 2-car garage
- Optional 3-season room or covered deck
- Duplex
- 9-foot ceilings
- All electric kitchen appliances
- Full-sized washer and dryer
- Pets permitted
- Lower level with ample storage
- Bullnose corners
- Multiple flooring options
- Candles in windows

## MAIN LEVEL



## OPTIONAL FINISHED LOWER LEVEL



# THE GIDEON AT GREAT ROCK

Floor plans may vary due to customization.



# THE COTTAGES AT GREAT ROCK



Surrounded by the picturesque hills and farmland of Lancaster County, Pennsylvania, our Great Rock neighborhood continues the tradition of vibrant Christ-centered living that has been the hallmark of Quarryville since its beginning. Neighborhood streets are named after hymn writers whose music has had a continuing impact on the spiritual development of God's people. Their hymns also contain the word, "Rock," referring to Christ. Join the many residents who have learned that Quarryville is a special place where neighbors become friends and friends become family.



QUARRYVILLE  
PRESBYTERIAN  
RETIREMENT COMMUNITY



To learn more, call 888-786-7331 | [Quarryville.com](http://Quarryville.com) | 625 Robert Fulton Highway | Quarryville, PA 17566

RETIRE the ORDINARY. *Live the Extraordinary!*