

THE ASHER



Two-story cottage

2 Bedroom | 2 Bath | 1-Car Garage
Two-story cottage with main and upper level



To learn more, call 888-786-7331 Quarryville.com
625 Robert Fulton Highway Quarryville, PA 17566

RETIRE the ORDINARY. *Live* the *Extraordinary!*[®]

THE ASHER

Nestled in the original part of our charming Great Rock neighborhood, the Asher welcomes you with lovely streets and meticulous landscaping. The bright and airy dining area and spacious great room greet you with warmth and comfort that extends throughout the home. The master bedroom and master bath offer a calming and relaxing retreat from the day.

ASHER SQUARE FOOTAGE:

Main level: 1,404 SF

Upper level:.....61 SF

Total:.....1,965 SF

Garage:.....279 SF

MONTHLY FEE INCLUDES:

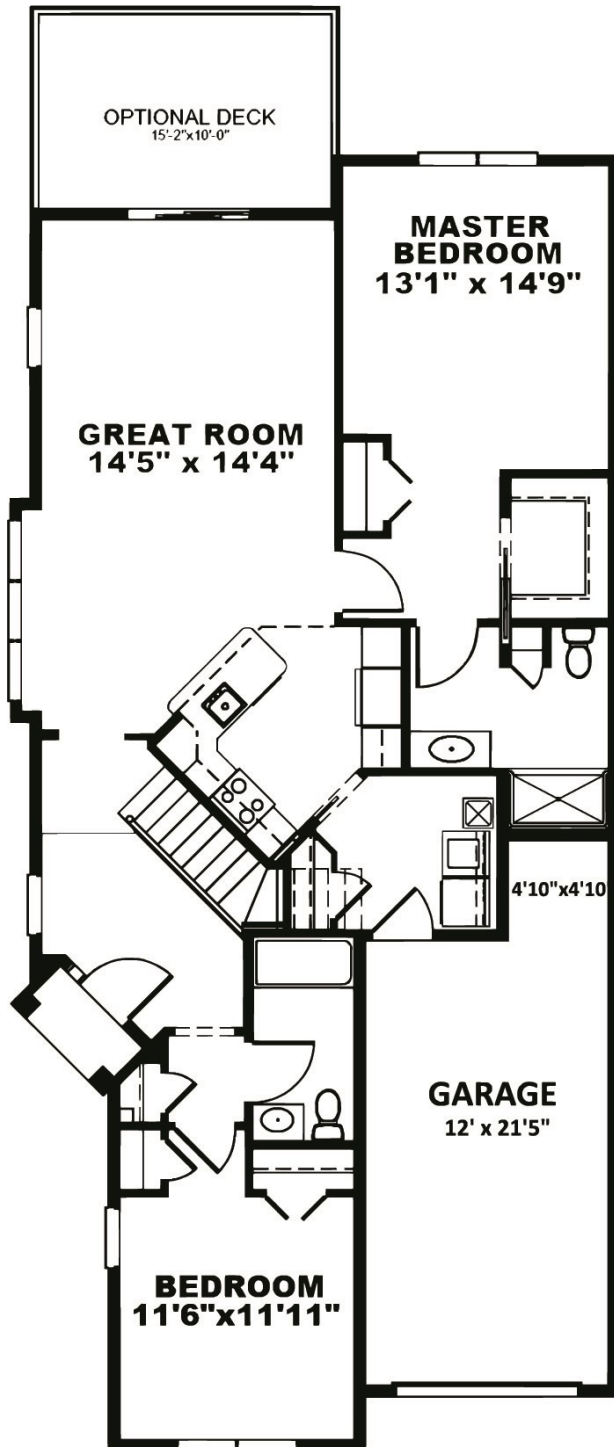
- * Utilities
- * Maintenance of grounds and common areas
- * Fitness/Wellness Center membership
- * Social and recreational events
- * Meal plan
- * Trash removal
- * 24-hour security
- * Snow removal
- * Property taxes
- * Priority admission to Supportive Living

FEATURES:

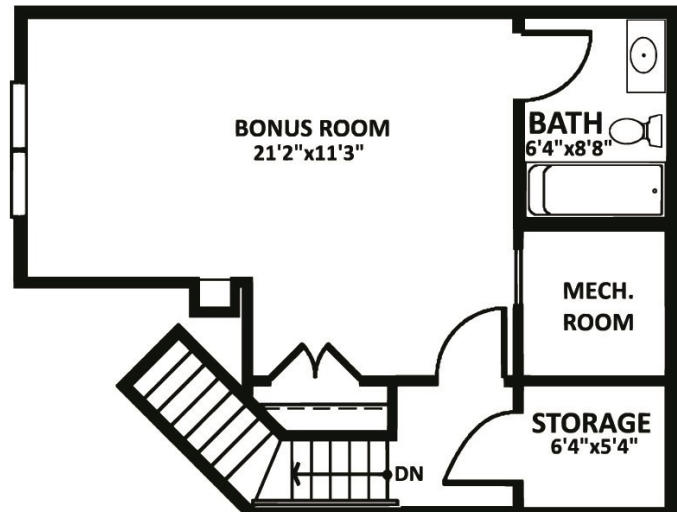
- * 2 bedroom/2 bath
- * Attached 1-car garage
- * 8-foot ceilings
- * All electric kitchen appliance
- * Full-sized washer and dryer
- * Pets permitted
- * Candles in windows
- * Patio

THE ASHER

MAIN LEVEL



UPPER LEVEL



THE ASHER

THE COTTAGES AT GREAT ROCK



Surrounded by the picturesque hills and farmland of Lancaster County, Pennsylvania, our Great Rock neighborhood continues the tradition of vibrant Christ-centered living that has been the hallmark of Quarryville since its beginning. Neighborhood streets are named after hymn writers whose music has had a continuing impact on the spiritual development of God's people. Their hymns also contain the word, "Rock," referring to Christ. Join the many residents who have learned that Quarryville is a special place where neighbors become friends and friends become family.



To learn more, call 888-786-7331 | Quarryville.com | 625 Robert Fulton Highway | Quarryville, PA 17566

RETIRE the ORDINARY. *Live* the *Extraordinary!*[®]