

THE ASHER



Two-story cottage

Main Level:

2 Bedroom | 2 Bath | 1-Car Garage

Two-story cottage with main and upper level



To learn more, call 888-786-7331 | Quarryville.com
625 Robert Fulton Highway | Quarryville, PA 17566

RETIRE the ORDINARY. *Live the Extraordinary!*[®]

THE ASHER

Nestled in the original part of our charming Great Rock neighborhood, the Asher is a delightful two-story cottage surrounded by meticulous landscaping. The bright and airy dining area and spacious great room greet you with warmth and comfort that extends throughout the home. The master bedroom and master bath offer a calming and relaxing retreat from the day.



ASHER

SQUARE FOOTAGE:

Main level 1,404 SF

Upper level 561 SF

Total 1,965 SF

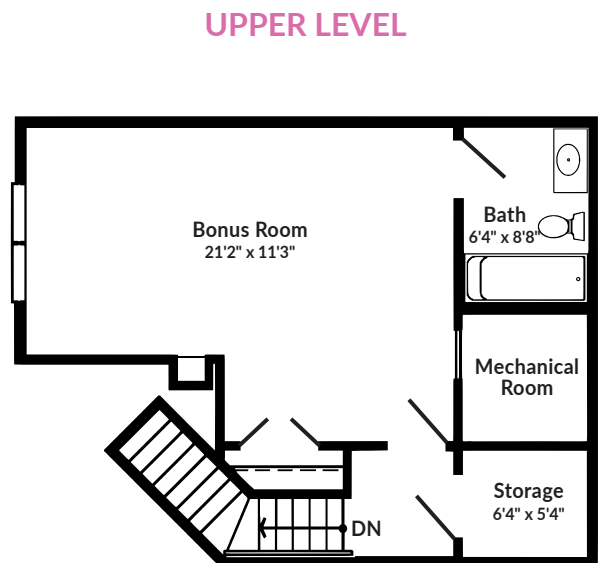
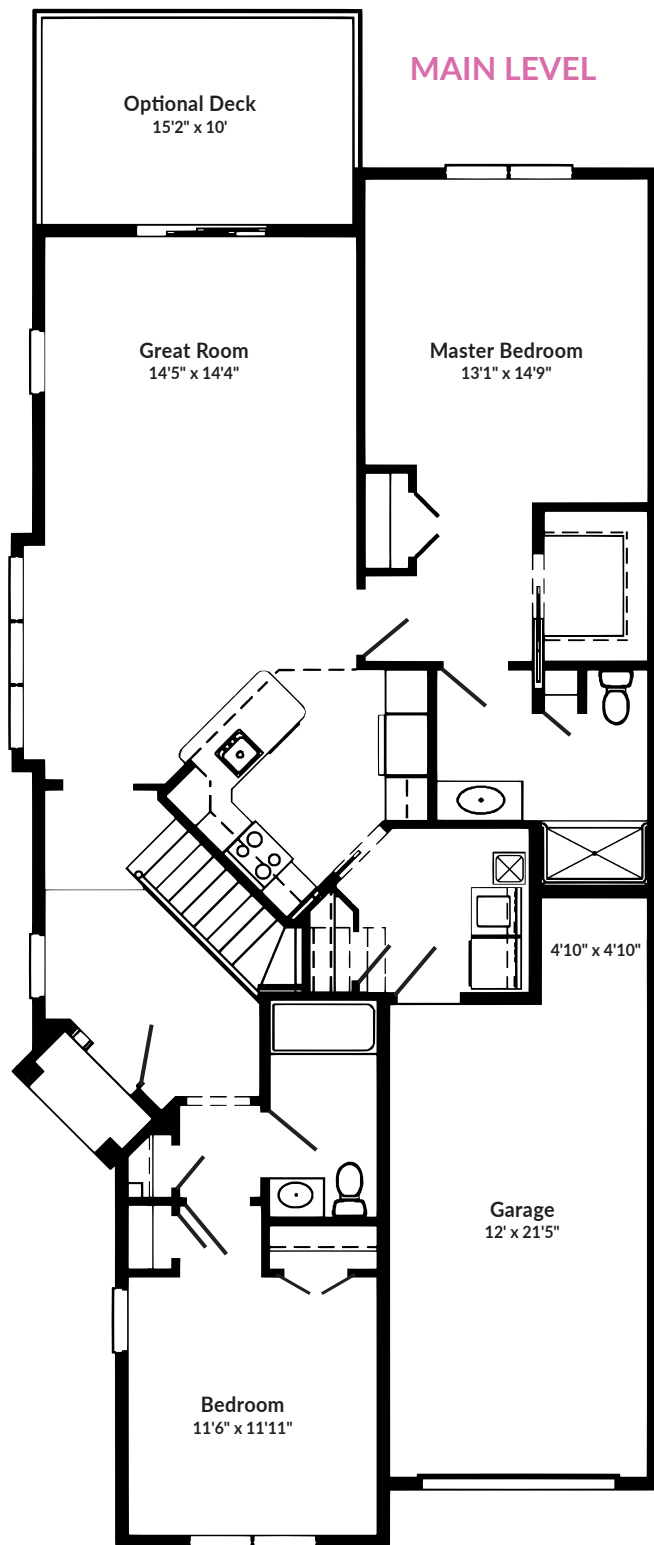
Garage 279 SF

MONTHLY FEE INCLUDES:

- Utilities
- Maintenance of grounds and common areas
- Fitness/Wellness Center membership
- Social and recreational events
- Meal plan
- Trash removal
- 24-hour security
- Snow removal
- Property taxes
- Priority admission to Supportive Living

FEATURES:

- 2 bedroom/2 bath
- Attached 1-car garage
- Optional 3-season room or covered porch
- Duplex
- 9-foot ceilings
- All electric kitchen appliances
- Full-sized washer and dryer
- Pets permitted
- Upper level with ample storage
- Bullnose corners
- Multiple flooring options
- Candles in windows



THE ASHER AT GREAT ROCK

Floor plans may vary due to customization.

THE COTTAGES AT GREAT ROCK



Surrounded by the picturesque hills and farmland of Lancaster County, Pennsylvania, our Great Rock neighborhood continues the tradition of vibrant Christ-centered living that has been the hallmark of Quarryville since its beginning. Neighborhood streets are named after hymn writers whose music has had a continuing impact on the spiritual development of God's people. Their hymns also contain the word, "Rock," referring to Christ. Join the many residents who have learned that Quarryville is a special place where neighbors become friends and friends become family.



QUARRYVILLE
PRESBYTERIAN
RETIREMENT COMMUNITY



To learn more, call 888-786-7331 | Quarryville.com | 625 Robert Fulton Highway | Quarryville, PA 17566

RETIRE the ORDINARY. *Live the Extraordinary!*